

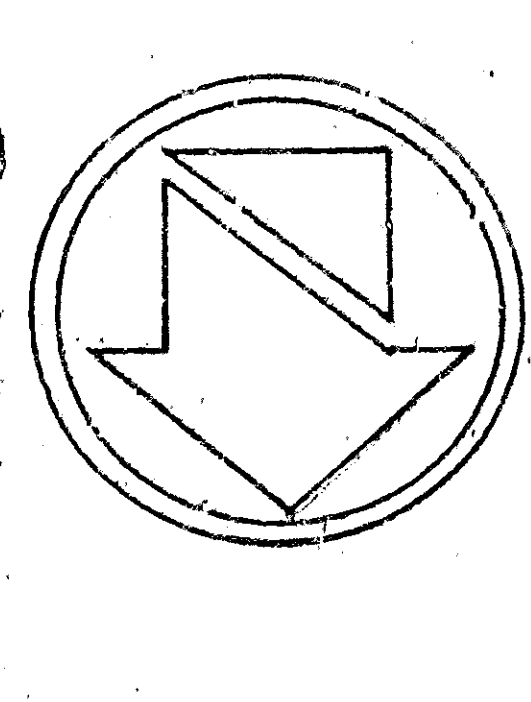
GENERAL NOTE:

- All Work Executed On This Plan Shall Be Done In Conformity With Application Provisions Of Standard Specification No 2271 and Standard Drawing No 2321 On File In The Office Of The City Engineer.
- A Prime Coat Shall Be Applied As Directed By The Engineer Prior To Flushing H.C. Paving.

BENCH MARK: TOP EXIST CURB, 34"E
 4" STA 15+30 ELEV
 99C.15 M.S.L.

TYPICAL SECTION
 SCALE: NONE

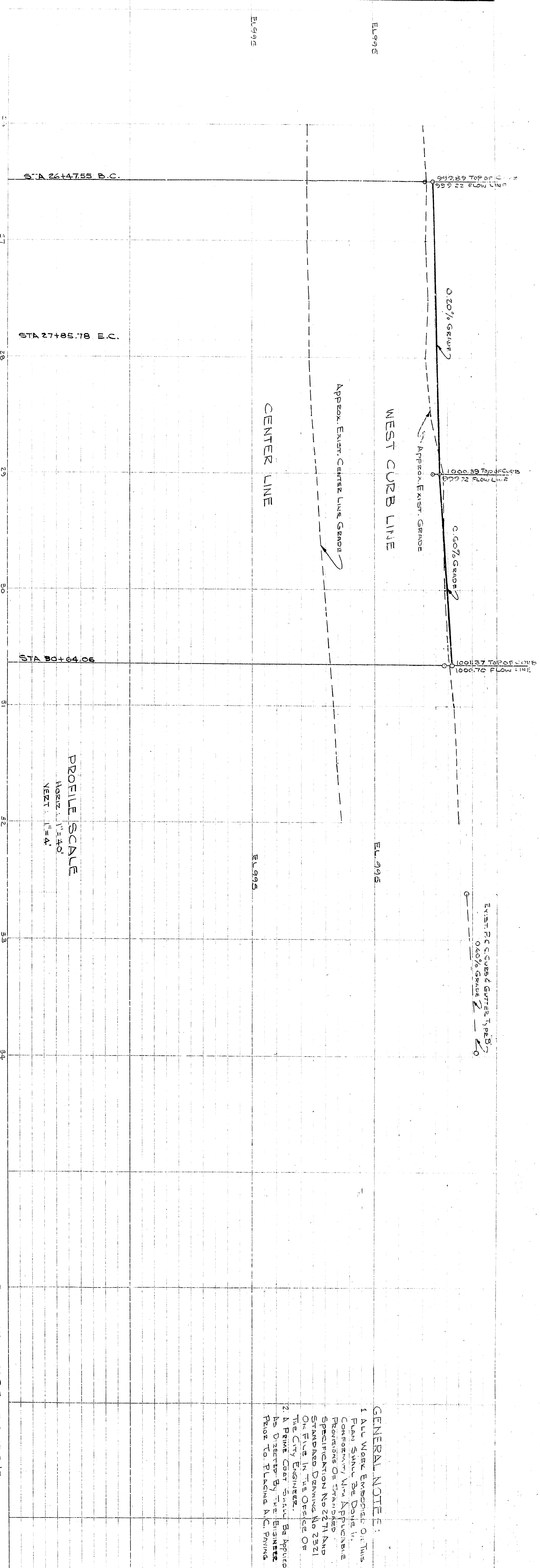
APPROVED	ADDED 5x8 TREE WALLS	REVISION	1/24/94	DATE
DESIGNED BY	CHRYSLER	CITY ENGINEER	REGISTERED CIVIL ENGINEER, 16485	
DRAWN BY	3475	CHECKED BY	1/24/94	
RECOMMENDED BY	1/24/94			
DEPARTMENT OF ENGINEERING CITY OF SAN BERNARDINO IMPROVEMENT PLAN CHRYSLER CORPORATION/DODE DEALERSHIP FROM STA 26+47.55 TO STA 30+64.06 SOUTH "E" STREET				



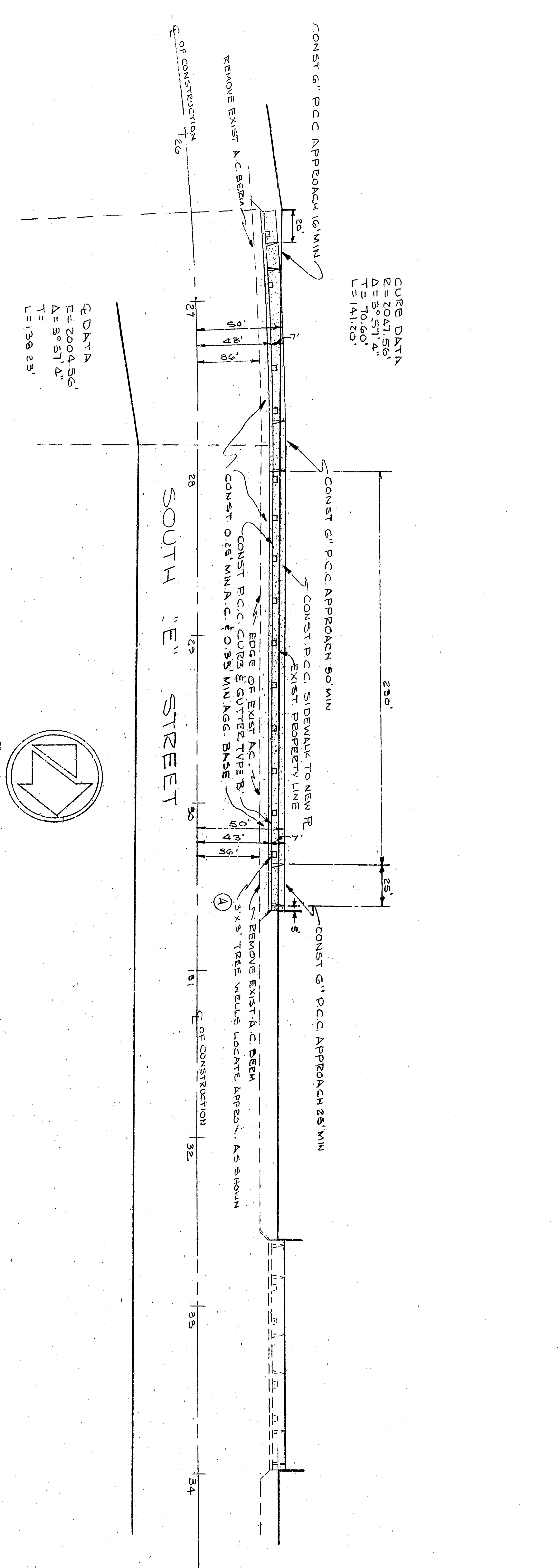
PLAN
 SCALE: 1/4" = 1'

CURE DATA
 C=2004.56'
 A=5.51'
 L=139.23'

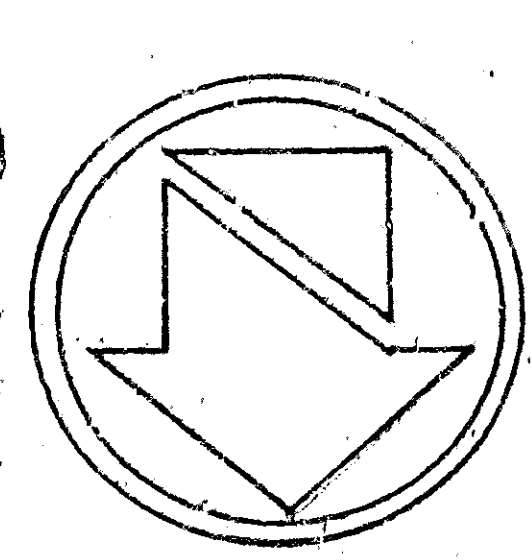
CURE DATA
 C=2041.56'
 A=5.51'
 L=141.20'



GENERAL NOTE:
 1. All Work Executed On This Plan Shall Be Done In Conformity With Applicable Provisions Of Standard Specification No 2271 and Standard Drawing No 2321 On File In The Office Of The City Engineer.
 2. A Prime Coat Shall Be Applied As Directed By The Engineer Prior To Flushing H.C. Paving.



TYPICAL SECTION
 SCALE: NONE



PLAN
 SCALE: 1"=40'

SYMBOL	ADDED 5x8 TREE WALLS	REVISION	DATE
APPROVED	C. J. ...	APPROVED	DATE
DRAWING NO.	3475	CHECKED BY	...
DESIGNED BY	...	RECOMMENDED BY	...
CITY OF SAN BERNARDINO DEPARTMENT OF ENGINEERING IMPROVEMENT PLAN CHEVALEER CORPORATION/DOUGL DEALEC-11 FROM STA 26+14.75 TO STA 30+64.06 SOUTH 'E' STREET			